



# Installation Instructions

Application Fits

2006-2011 Honda Civic Coupe/Sedan/Hybrid  
X7233 & X7234

2" & 1.25" EcoHitch Stealth

200 lb. Tongue Weight/ 2,000 lb. Towing Weight

Torklift Central  
315 Central Ave N  
Kent, WA 98032  
253-854-1832  
[www.torkliftcentral.com](http://www.torkliftcentral.com)  
[support@tlcentral.com](mailto:support@tlcentral.com)

## Stay Connected



torkliftcentral



torkliftcentral



tlcentral



torklift central



torklift central



QTY	Fastener
8	3/8" Flat Washer
4	3/8" Lock Washer
4	3/8" Inner Tooth Lock Washer
4	3/8" Hex Nut
4	3/8" x 1-1/2 Hex Bolts
1	3/8" Fishwire
4	3/4" x 2" Plate Washers
1	3/8" x 1" Push Tree Pin

**READ THESE INSTRUCTIONS THOROUGHLY BEFORE BEGINNING INSTALLATION!**

**Step 1.** Place vehicle on ramps or on suitable jack stands.

**Step 2.** Have an assistant help you when removing or installing the rear bumper. Some vehicles have a black cover under the bumper. Remove this cover first to continue bumper removal.

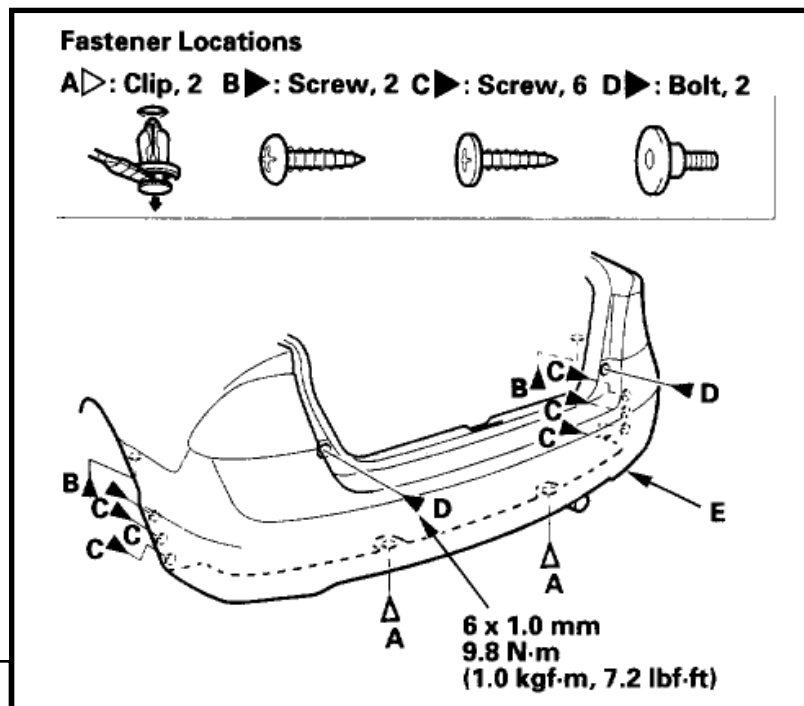
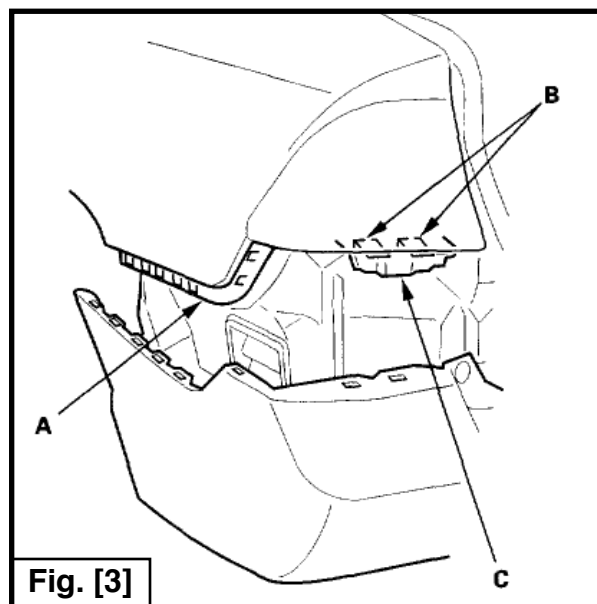
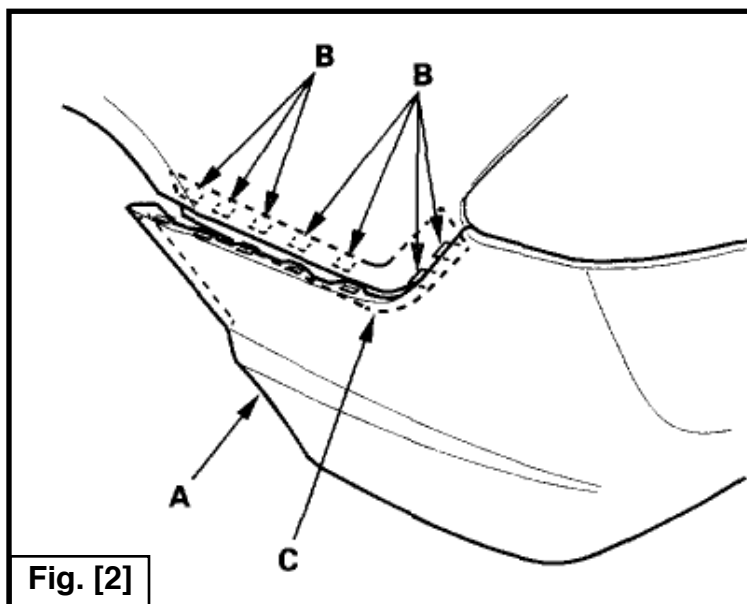


Fig. [1]

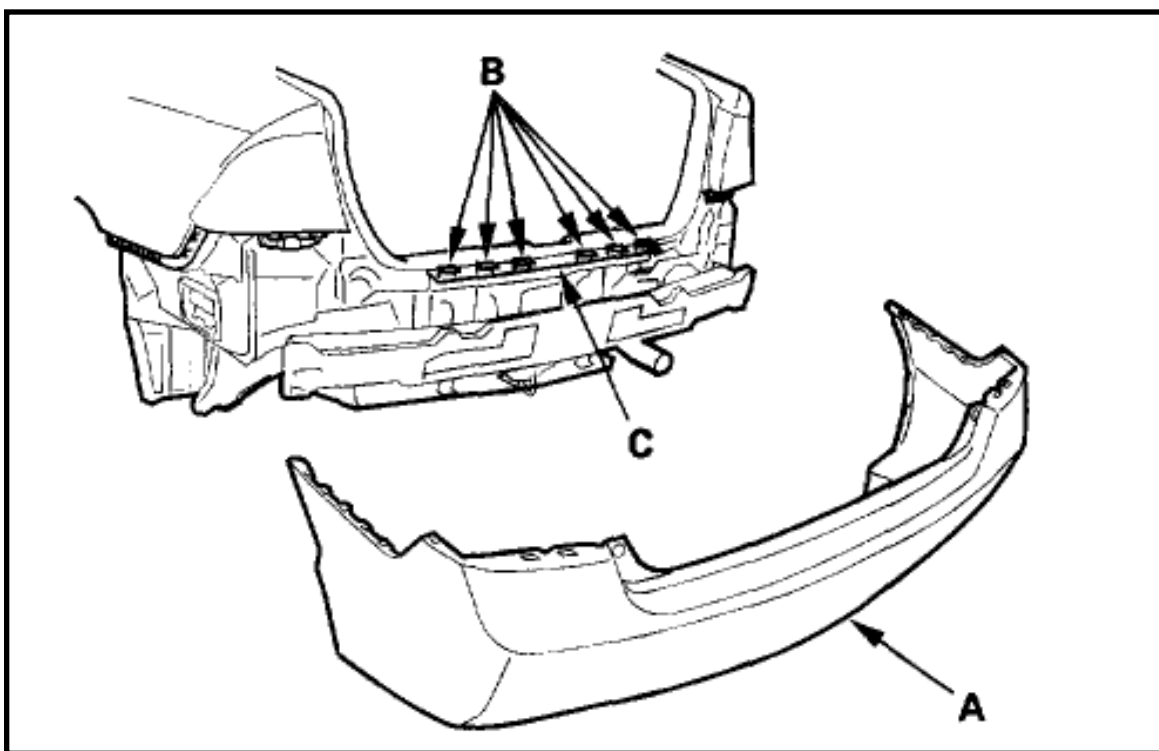
**Step 3.** Remove the clips (A), screws (B, C), and bolts (D) securing the rear bumper (E).

**Step 4.** Pull on the rear bumper (A) at the wheel arch areas to release it from the hooks (B) on the side spacers(C). Repeat process on opposite side.



**Step 5.** With the help of an assistant, while pulling the wheel arch portion away from the side spacer (A), pull the rear bumper to release the bumper from the hooks (B) on the side bracket (C).

**Step 6.** With the help of an assistant, pull the rear bumper to release the bumper (A) from the hooks (B) on the upper brackets (C).



**Fig. [4]**

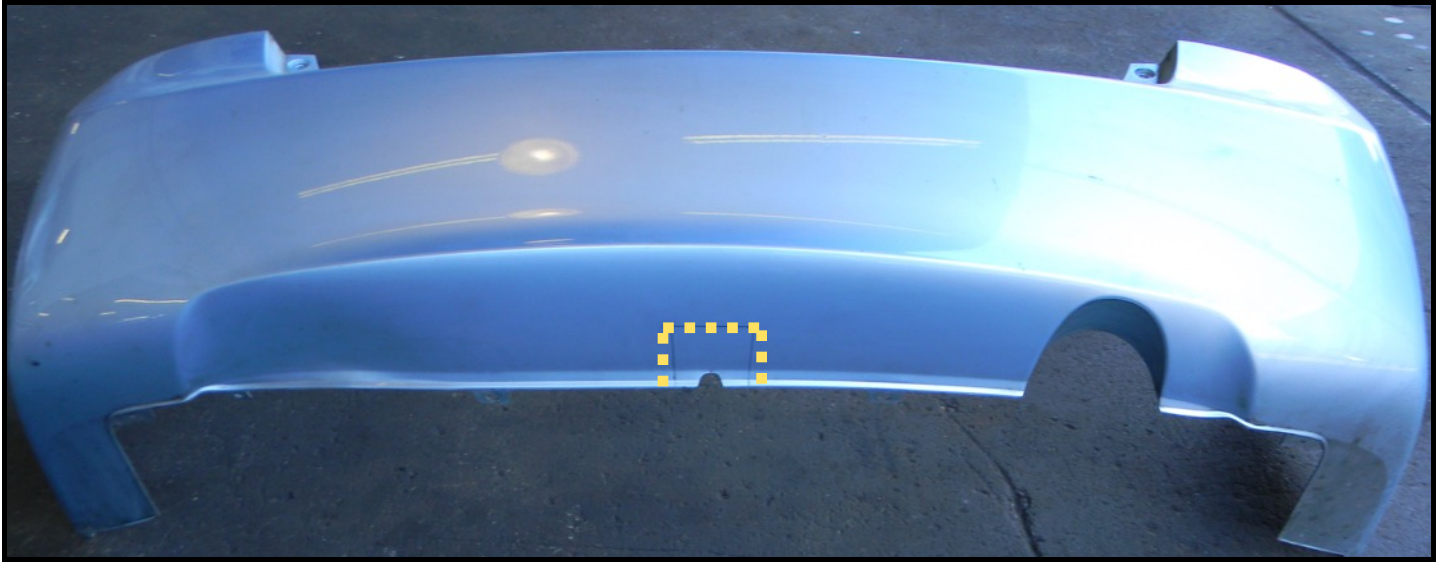
**Step 7.** Find the center of the bumper fascia and mark for trimming using the measurements given for your model.

**X7233 (2"):** 3-3/4" wide by 3" tall.

**X7234 (1.25"):** 3" wide by 2" tall.

Use an air saw or utility knife to trim the bumper fascia.

See Figure [5] for reference only.



**Step 8.** Using a lubricant such as WD-40, disconnect the rubber exhaust bung to lower the exhaust. Support the exhaust with a stand or other prop.

**NOTE: DO NOT LET EXHAUST HANG FREELY TO AVOID DAMAGE!**

**Step 9.** Remove the exhaust heat shield and set aside for reinstallation.

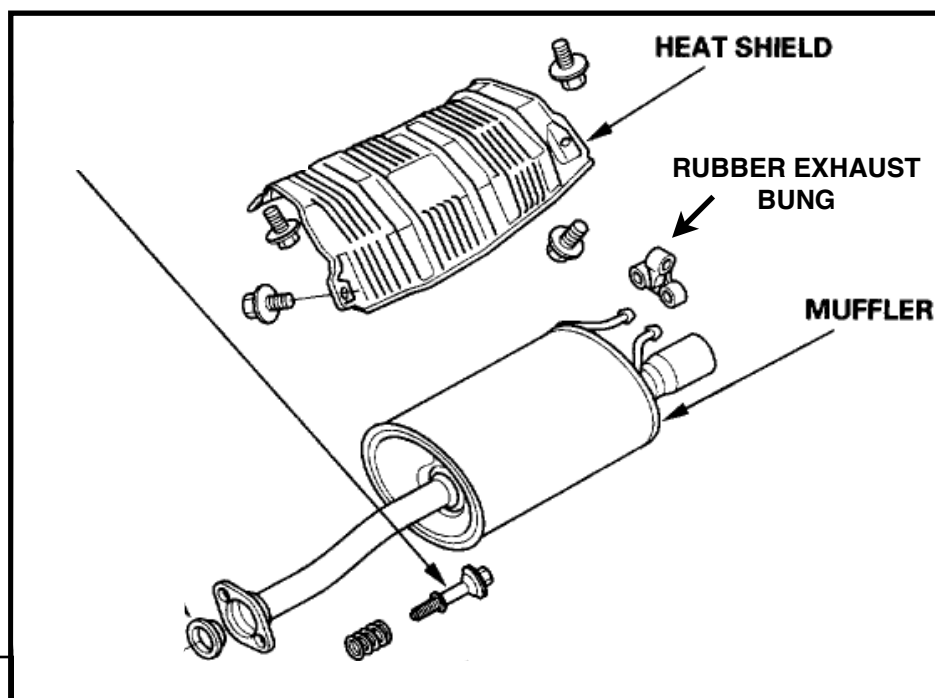


Fig. [5]

**Step 10.** Starting on the passenger side, fish the bolt hardware into the frame rails by feeding the coil end of bolt fisher through hole A in Figure [6] and out of hole C. Once the coil is accessible, attach (1) 3/8"x1-1/2" bolt, (1) 3/8" internal tooth star lock washer, and (1) 3/4"x2" plate washer, to the coil end of the bolt fisher. With the hardware attached, pull the assembly into position. Repeat for hole B. See Figure [7] for reference only. Figure [8] shows completed process.

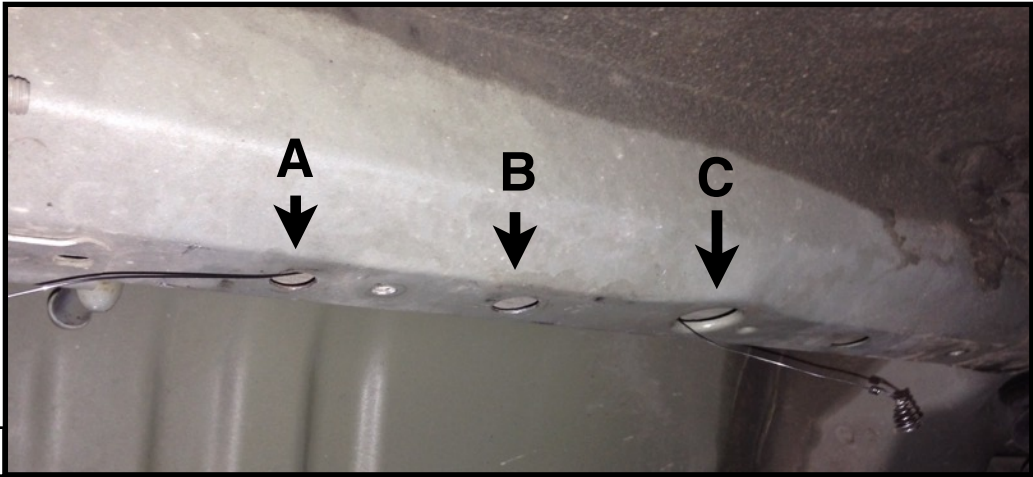


Fig. [6]

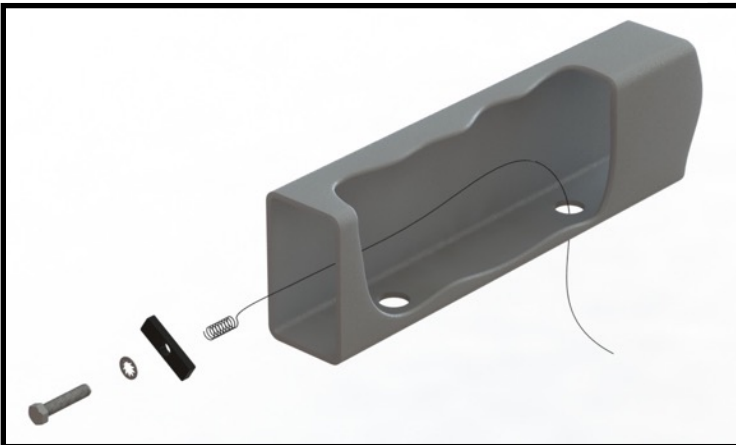


Fig. [7]

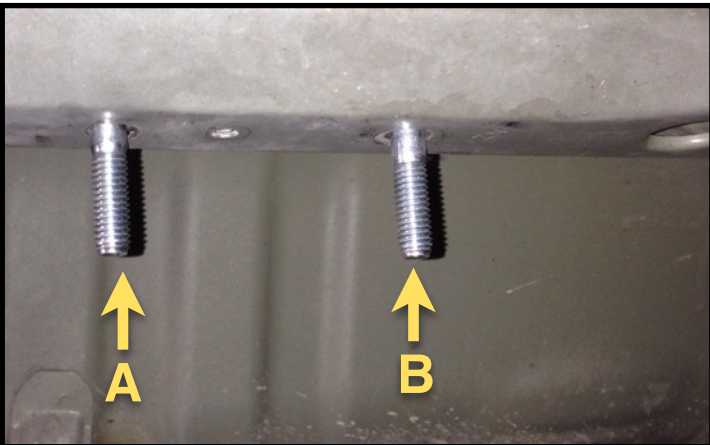


Fig. [8]

**Step 11.** Repeat Step 10 using Hole C as your entry point to fish hardware into Hole A and Hole B. See Figure [9].

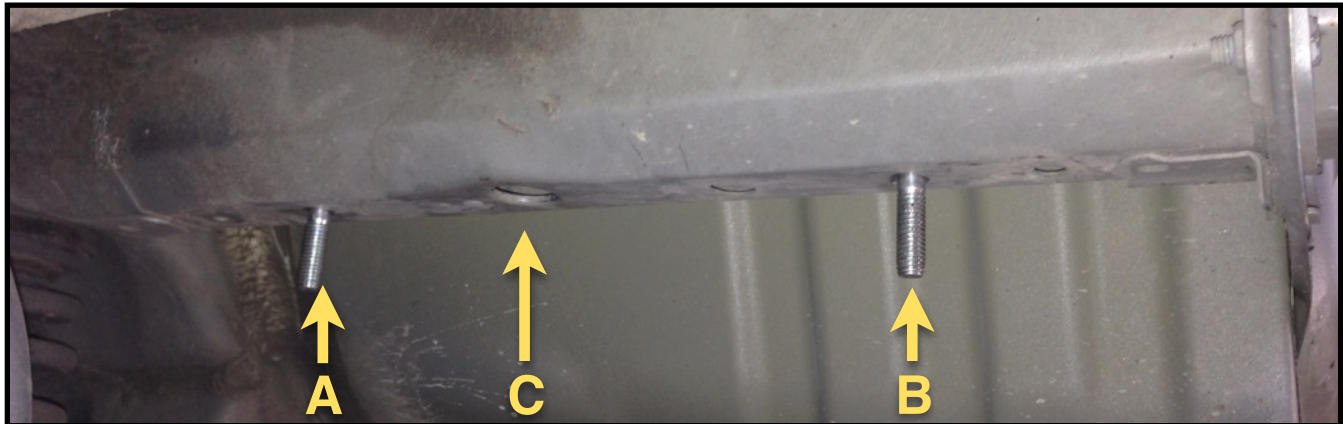


Fig. [9]

**Step 12.** Trim the exhaust heat shield as shown in Figure [10]. Use the ribs in the heat shield as a reference for trimming. This will allow the heat shield to be re-installed and be sandwiched between the frame and the trailer hitch.

**Step 13.** Reinstall the trimmed heat shield using the factory bolts. See Figure [11].



Fig. [10]



Fig. [11]

**Step 14.** Raise hitch into position on the hanging bolt hardware, being cautious not to push the hardware back into the frame rails.

**Step 15.** With hitch in position on the frame, take (2) 3/8" flat washers, (1) 3/8" lock washer, and (1) 3/8" hex nut, and hand tighten. Repeat on remaining bolts. Once all bolts have been secured, torque all hardware to 35 ft-lbs. See Figure [12].

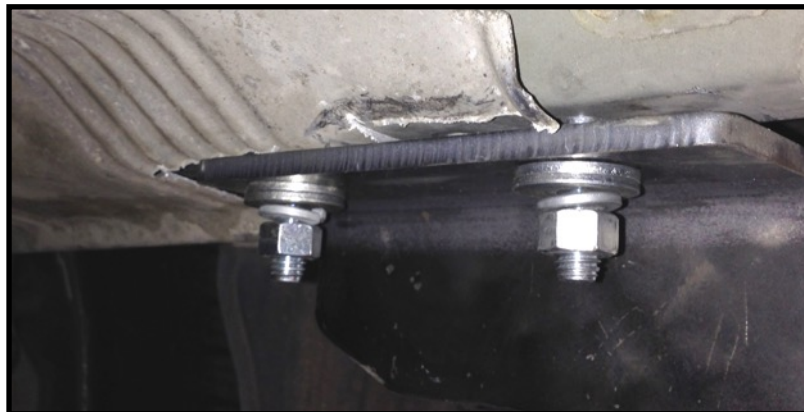


Fig. [12]

**Step 16.** Reinstall exhaust and bumper in reverse order of removal starting at Step 8.

**NOTE:** If your vehicle has the lower black cover, you will notice that one of the holes is now covered by the trailer hitch. Line up the hole in the cover with the additional hole in the hitch and install the cover using the supplied 3/8" push tree pin.

See Figure [13].



Fig. [13]

**Congratulations on the completed installation of the Honda Civic Stealth EcoHitch! It is designed with a lifetime warranty for a lifetime of enjoyment. If you have any questions or suggestions please do not hesitate to contact our tech support at [support@tlcentral.com](mailto:support@tlcentral.com) or by phone at 253 854-1832.**

# WARRANTY/DISCLAIMER INFORMATION

Torklift Central requires proof of purchase for warranty claim registration, with pictures of any defective product before issuing a replacement. Torklift will not accept claims on any product without proof of purchase, which can be faxed, scanned, emailed or mailed to the information provided below. Torklift Central warrants its hitches, custom hitch receivers and accessories (excluding electrical wire harnesses which carry a warranty from their specified manufacturer) from date of purchase against defects in material and workmanship under normal use and service for the ownership life of the original consumer purchaser. Torklift Central will replace free of charge any part that proves defective in material or workmanship when presented to Torklift Central, transportation charges prepaid by purchaser, at the address below. **This warranty is limited to defective parts replacement only. Labor charges and/or damage incurred in installation or replacement, as well as incidental and consequential damages connected therewith are excluded.** This warranty does not include normal wear and tear or the finish and paint. Rusting, cracking or peeling of the finish is also excluded. Some states do not allow the exclusion or limitation of incidental or consequential damages, so the above limitation or exclusion may not apply to you. Any damage to Torklift Central products as a result of misuse, abuse, neglect, accident, improper installation or any use violative of instructions furnished by Torklift Central will void the warranty. This warranty gives you specific legal rights and you may also have rights, which vary from state to state. With warranty service, you may be able to go to a small claims court, a state court or a federal district court.

Although Torklift Central trailer hitches are both tested and rated for towing within the specific capacity label found on each trailer hitch. Torklift Central assumes no liability for vehicle manufacturers warranty due to the use of a Torklift Central trailer hitch being used for towing behind any vehicle or using the trailer hitch in a manner that it was not designed for. Although this specific trailer hitch has a load rating, which includes trailer tongue weight, and a trailer weight carrying capacity, Torklift Central is not responsible for the voiding of any warranty on any vehicle due to factory towing limitations. All vehicle warranties are the sole property and responsibility of the owner of the vehicle that the Torklift Central trailer hitch is installed upon. Torklift Central does not endorse towing behind any vehicle if the vehicles manufacturer states that towing is not recommended. Check your vehicle's owner's manual for the proper tow rating of your vehicle.

**ADDRESS:** 315 Central Ave N. Kent, WA 98032

**\*WARNING\*** Your vehicle may have a lower tow rating than this trailer hitch. If your vehicle's tow rating is less than the rated towing capacity on your Torklift Central trailer hitch, your trailer hitch capacity is limited to your vehicle's factory rated towing capacity.

**FOR EXAMPLE:** the label on your Torklift Central trailer hitch states it's capacity is rated for 500 pounds tongue weight and 5,000 pounds towing weight. However your vehicle's factory rated towing capacity is limited to only 350 pounds tongue weight and 3,500 pounds towing weight. In this example your maximum towing capacity of your Torklift Central trailer hitch is limited to 350 pounds tongue weight and 3,500 pounds towing weight as stated by your vehicle's maximum factory tow rating.

**\*DANGER\*** Never exceed your vehicle's manufacturer's recommended towing capacity which may be a lower rating than this trailer hitch

Unsure of your tow rating? Download our towing app from the app store to find your vehicles tow rating.  
[www.torkliftcentral.com/app.php](http://www.torkliftcentral.com/app.php)